

East Harptree C of E Primary School Newsletter 29

Friday 6th May 2022



Congratulations to our Stars of the Week!



Ukraine Appeal – our children are doing a marvellous job making bracelets, origami and other things to sell, and organizing the lunchtime sales.

Well done everyone!

New bike rack - Esme was our first user!



EH High Street is due to be closed on 10th May for up to 4 days. The road will be completely shut to vehicles but the pavement will still be open.

The diversion is via Coley Road – Benleaze Road – Eastwood – Whitecross Road – High Street (remainder) - & Vice Versa.

PH CAMPS

MAY/JUNE HOLIDAY CAMPS

30TH MAY - 1ST JUNE
08:00 - 17:30



VENUES

Bristol

- St. Peter's Primary School - Portishead
- Ubley Primary School - Ubley

Hampshire

- Kimpton Primary School - Andover

Wiltshire

- Broad Hinton Primary School - Broad Hinton
- King's Lodge Primary School - Chippenham
- Princecroft Primary School - Warminster
- St. Barnabas Primary School - Devizes
- St. John's Primary School - Tisbury

4-14
years

PH CAMPS PRICES

Breakfast Club
£4.55

Day bookings from
£22.75*

Extended Club
£9.50

BOOK NOW

www.phcamps.co.uk/events

*When booked before early booking deadline



Early booking deadline 15th May 2022

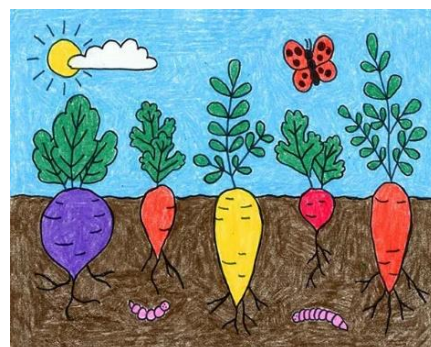
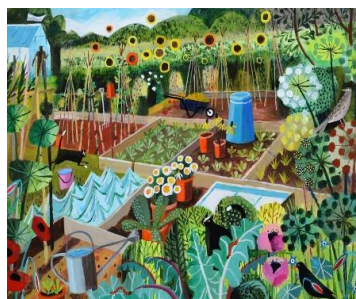
After the early booking deadline ends, the day rate is £24.75 per day.

Ofsted
Registered

The Flower Show Program Cover Competition 2022

Produce a picture based on the theme of

'The Vegetable Plot'



You could win a £20 book voucher!



All entries to Mr Harvey by May 16th





Our school is raising money by collecting reusable clothes.

Please help us by donating your unwanted reusable clothes and accessories.
Donated items become affordable clothing and accessories.

**WE ACCEPT CLEAN,
GOOD QUALITY, DRY,
REUSABLE CLOTHING**

- | | |
|---|---|
| <input checked="" type="checkbox"/> Adults, Childrens & Babies Clothing | <input checked="" type="checkbox"/> Jewellery and Accessories |
| <input checked="" type="checkbox"/> Paired Shoes and Footwear | <input checked="" type="checkbox"/> Belts and Handbags |

A full list of reusable items is listed on our website
www.rags2riches4schools.co.uk

WE DO NOT ACCEPT

POOR QUALITY ITEMS SUCH AS
DIRTY, WET, RIPPED OR SOILED
CLOTHES.
PILLOWS, DUUVETS, CURTAINS,
BOOKS CDs OR ANY UNIFORM

Please use the clothing bag provided.
You can also use any additional bag if required.



Gardening Club

If you have any of the following you don't need, we would be very grateful for them for the new Year 3/4 Gardening Club!

A cold frame/similar

Cloches

Watering cans

Seed trays

Seeds

Trowels

Plant labels

Scissors or secateurs

SNACKS - Please only send in fruit, dried fruit or cut up vegetables for KS2 morning snack – KS1 are provided with a vegetable or fruit snack. Also please remember we are a **NUT FREE** school. Only water in water bottles please!

PTA Clothing collection 19th May – ask Vikki Walker for more

Diary Dates

Mondays – Lunchtime KS2 Korean Club in Squirrels classroom

Tuesdays after school – PH Sports Netball/Basketball Club 3.30-4.30pm with Mr Evans

Thursday afternoons – Forest school Reception and Year 1; Ukulele Club Year 6

Fridays – Football club 3.30-4.30pm with Raph Burke

Monday 9th May – Messy Church 3.30-4.30pm in school with Mrs Banks

18th May – Year 3 and 4 Athletics with Chew Valley School

19th May PTA Clothing Collection

Wednesday 25th May Year 2 Strike and field event with Chew Valley School

Thursday 26th May – Jubilee celebration in school (all pupils)

Friday 27th May – INSET DAY

Monday 30th May to Friday 3rd June – Half Term

Sunday 5th June – EH Village Street Party

Saturday 11th June – CV Friends of Cancer Research Safari Supper

15th June Yr 5 and 6 Quad Kids sports event with Chew Valley School

28th June Year 1 Tag Tails event with Chew Valley School

4th-8th July Offer Class residential to Kilve Court

Tuesday 12th July – Sports Day at EH Playing Fields

Saturday 16th July EH Village Fete 2-5pm EH Playing Field

Thursday 21st July – Last day of term